

FREE  
AIRFARE

See back for details

11 DAY RIVER CRUISE HOLIDAY

Including two nights in  
Lucerne, Switzerland

HOSTED  
BY JOE &  
KATHERINE  
SATROM



# Tulip Time on the Romantic Rhine River Cruise

*Switzerland • France • Germany • the Netherlands including Keukenhof Gardens*

**Tour Dates:** April 17 - 27, 2019

  
Direct Travel  
personalized experiences

  
satrom  
TRAVEL & TOUR





Cross the Reuss River via the historic Chapel Bridge in Lucerne, Switzerland



Enjoy seven-nights cruising along the Romantic Rhine River

# Tulip Time on the Romantic Rhine River Cruise

**11 Days • 23 Meals** Experience the re-awakening of Spring along the Romantic Rhine River. From the enchanting Keukenhof Gardens, in the Netherlands, at the peak of tulip season to the majestic heights of Switzerland. See the countryside bloom as we sail these two historic rivers of Europe.



## CRUISE AND HOTEL ACCOMMODATIONS

**Days Two and Three** – Hotel Europe, Lucerne or similar, Lucerne, Switzerland

**Days Four through Ten** – Aboard the *MS Emerald Dawn*

*Post cruise hotel stays available in Amsterdam. Call for details.*

## EXCEPTIONAL INCLUSIONS:

- ❖ **23 Meals** (9 breakfasts, 6 lunches and 8 dinners)
- ❖ **Airport transfers** on tour dates when air is provided by Mayflower Cruises & Tours
- ❖ Visit **four countries**
- ❖ Two-night **hotel stay and touring** in Lucerne, Switzerland
- ❖ Visit to the magnificent **Keukenhof Gardens**
- ❖ **Seven-night cruise**
- ❖ **First-class service** by an English-speaking crew
- ❖ **Shore excursions** with English-speaking **local guides**
- ❖ Personal **listening device** for onboard excursions
- ❖ All meals included onboard with a **variety of international cuisine**
- ❖ Complimentary **regional wines, beer and soft drinks** accompany onboard lunches and dinners
- ❖ Complimentary **bottled water** in your stateroom
- ❖ Complimentary **WiFi onboard**
- ❖ Complimentary **bicycles onboard** for use ashore
- ❖ Variety of **onboard evening entertainment**
- ❖ **\$55 in Mayflower Money**

**DAY 1: Wednesday, April 17 – Depart the USA**  
Today you'll depart the USA on your overnight flight to Zurich, Switzerland.

**DAY 2: Thursday, April 18**  
– **Zurich to Lucerne, Switzerland**

Upon arrival in Zurich, transfer to your hotel in Lucerne to begin your Swiss adventure. The afternoon is at leisure to begin discovering your beautiful





Explore Heidelberg Castle on an included excursion with wine tasting



Flowers and fragrances fill Keukenhof Gardens

new surroundings. This evening, join your Mayflower Cruise Directors and traveling companions for an included dinner at the hotel. **Meal: D**

**DAY 3: Friday, April 19**  
– **City Tour of Lucerne**

After breakfast, an included walking tour highlights the city's landmark, the famous 14th-century Chapel Bridge with its paintings of heroic town events, that crosses the Reuss River. See the 17th-century Renaissance Town Hall and town squares, all set amongst the beautiful backdrop of the Swiss Alps. The remainder of the day is at leisure.

**Meal: B**

**DAY 4: Saturday, April 20**  
– **Optional Excursion: Mt. Pilatus**

Before departing for your ship in Basel, the day is free to enjoy at leisure or join the morning optional excursion to Mt. Pilatus – a mountain overlooking Lucerne that offers a unique alpine experience! This afternoon, travel by motorcoach to Basel, Switzerland for embarkation of the *MS Emerald Dawn*, home for the next seven nights. **Meals: B, D**

**DAY 5: Sunday, April 21**  
– **Breisach, Germany**

Today you will visit a typical Black Forest village, full of charm and many Cuckoo clocks and other German specialties. You will experience the famous Black Forest Cake Assembling presentation and tasting.

**Meals: B, L, D**

**DAY 6: Monday, April 22**  
– **Strasbourg, France**

Between France and Germany lies lovely Strasbourg, one of Europe's most attractive cities. Enjoy a panoramic tour before the walking tour of the city center takes you on a stroll through the charming Old Quarter, "La Petite France," with its typical Alsatian half-timbered houses. The Main Square is dominated by the magnificent gothic cathedral with carvings as delicate as any piece of hand-made lace. **Meals: B, L, D**

**DAY 7: Tuesday, April 23**  
– **Heidelberg, Germany**

Continue sailing to the town of Mannheim, located at the confluence of the Rhine and Neckar Rivers. A port call is made in Mannheim for disembarkation of the included excursion to Heidelberg. Known as Germany's oldest university town, Heidelberg is also famous for the ruins of its red-walled 16th-century castle. This afternoon the ship continues to sail towards Koblenz.

**Meals: B, L, D**

**DAY 8: Wednesday, April 24**  
– **Koblenz, Germany**

Cruise to the 2000-year-old town of Koblenz, which is situated at the confluence of the Rhine and Mosel Rivers. Enjoy a guided walking tour of Koblenz or take an optional tour to visit Cochem and the Reichsburg Castle. Since both tours run at the same time, you have to select one of the

two. This afternoon you won't want to miss the spectacular scenery as you cruise through the "Splendor of the Rhine" – a UNESCO World Heritage Site featuring St. Goar and the legendary Lorelei Rock.

**Meals: B, L, D**

**DAY 9: Thursday, April 25**  
– **Cologne, Germany**

While visiting 2,000-year-old Cologne, enjoy an included walking tour to the town center and Domplatz – home of the magnificent cathedral which serves as the symbol of the city. Relax onboard with an afternoon and evening sailing on the river.

**Meals: B, L, D**

**DAY 10: Friday, April 26**  
– **Amsterdam, Holland**

Amsterdam boasts ornately gabled 16th-century townhouses and hundreds of canals and bridges. This morning, during a narrated canal cruise, you get a view of the city from a different perspective. After lunch, depart for Keukenhof Gardens where you admire gorgeous flowers at the height of tulip season on this amazing life enriching experience! **Meals: B, L, D**

**DAY 11 – Amsterdam / USA**

Bid a fond farewell to Europe and return home with wonderful memories from your Tulip Time cruise along the Rhine and Mosel Rivers. **Meal: B**

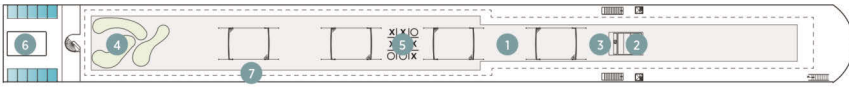
*Itinerary and vessel are subject to change.*



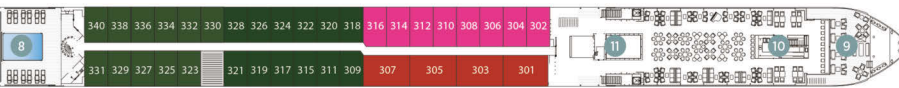
Seven nights accommodations aboard the  
**MS Emerald Dawn**

Built: 2015 Speed: 15.5 mph Staterooms: 80 Suites: 12 Length: 443 ft. Crew: 47

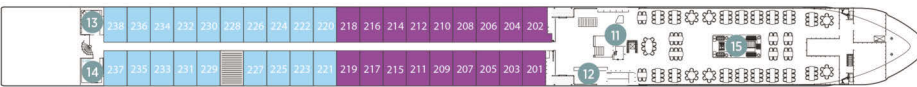
**SUN DECK**



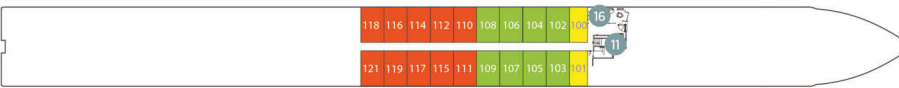
**HORIZON DECK**



**VISTA DECK**

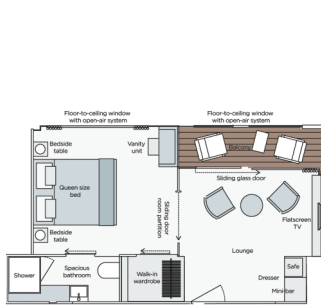


**RIVIERA DECK**



**Public Areas and Ship Amenities**

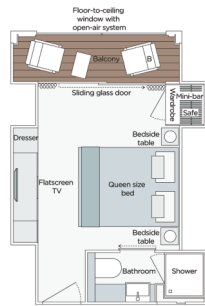
- 1 Sun Deck with Deck Chairs
- 2 Navigation Bridge
- 3 Sky Barbecue
- 4 Golf Putting Green
- 5 Games Area
- 6 Retractable Glass Roof
- 7 Walking Track
- 8 Daytime Pool & Bar / Evening Cinema
- 9 The Terrace
- 10 Horizon Bar and Lounge
- 11 Elevator
- 12 Reception
- 13 Wellness Area
- 14 Fitness Area
- 15 Reflections Restaurant
- 16 Hairdresser



**Owner's One-Bedroom Suite**

315ft<sup>2</sup>

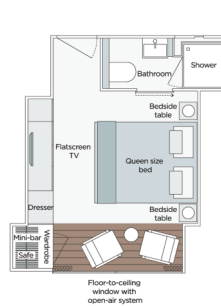
**SA**



**Grand Balcony Suite**

210ft<sup>2</sup>

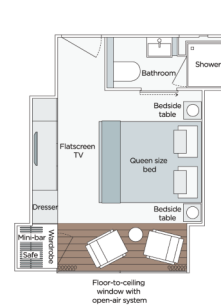
**S**



**Panorama Balcony Suite**

180ft<sup>2</sup>

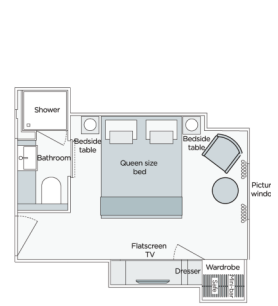
**A**



**Panorama Balcony Suite**

180ft<sup>2</sup>

**B C**



**Emerald Stateroom**

162ft<sup>2</sup>

**D E**

**2019 DEPARTURE DATE: April 17**

CATEGORY	DECK	PER PERSON TWIN	SINGLE ROOM
<b>D E</b> Emerald Stateroom	Riviera	\$4,399	add \$2,099
<b>B C</b> Panorama Balcony Suite	Vista	\$4,899	add \$2,389
<b>A</b> Panorama Balcony Suite	Horizon	\$5,399	add \$2,649
<b>S</b> Grand Balcony Suite	Horizon	\$5,899	N/A
<b>SA</b> Owner's One-Bedroom Suite	Horizon	\$6,599	N/A

**Travel Protection Plan**

Direct Travel will quote travel protection costs when you make your reservations.

- Cancellation Charges without Travel Protection Plan
- 91 days or more ..... Deposit Amount
  - 90 days to day of departure ..... 100% of the total tour
  - No refund on unused portions of the tour

Once paid all monies are non-refundable unless Travel Protection Plan has been purchased. **Passport must be valid through October 30, 2019**



**FREE AIRFARE** from anywhere in the contiguous United States when booked by September 30, 2018!

**TOUR ACTIVITY LEVEL**



FOR RESERVATIONS OR INFORMATION CONTACT:

**Bismarck Office:**

**701-258-5000**

**800-833-8787**

561 S. 7th St.  
 Bismarck, ND 58504  
 Next to the Barnes & Nobles

**Minot Office:**

**701-838-1000**

**800-732-0553**

1015 S. Broadway  
 Minot, ND 58701  
 Town & Country Center

www.DirectTravelND.com/rhine  
 info\_dakotas@dt.com