



bmsSO
BISMARCK-MANDAN
SYMPHONY ORCHESTRA

**BEMIDJI
SYMPHONY
ORCHESTRA**

**FREE
AIRFARE**
WHEN BOOKED BY
6/30/2021

Hosted by:
Beverly Everett
Bismarck – Mandan
Symphony Orchestra
Music Director

Bemidji Symphony
Orchestra
Music Director



Tulip Time on the Romantic Rhine

Switzerland • France • Germany • the Netherlands

Tour Dates: April 19 – 29, 2022


Direct Travel
personalized experiences

Tulip Time on the Romantic Rhine



Cross the Reuss River via the historic Chapel Bridge in Lucerne, Switzerland



Enjoy seven-nights cruising along the Romantic Rhine River

DAY 1 Depart the USA: Today you'll depart the USA on your overnight flight to Zurich, Switzerland.

DAY 2 Zurich to Lucerne, Switzerland: Upon arrival in Zurich, transfer to your hotel in Lucerne to begin your Swiss adventure. The afternoon is at leisure to begin discovering your beautiful new surroundings. This evening, join your Mayflower representative and traveling companions for an included dinner at the hotel. **Meal: D**

DAY 3 Lucerne: After breakfast, an included walking tour highlights the city's landmark, the famous 14th-century Chapel Bridge with its paintings of heroic town events, that crosses the Reuss River. See the 17th-century Renaissance Town Hall and town squares, all set amongst the beautiful backdrop of the Swiss Alps. The remainder of the day is at leisure. **Meal: B**
DiscoverMORE: Mt. Pilatus (additional expense)

DAY 4 Lucerne – Basel: Before departing for your ship in Basel, the day is free to enjoy at leisure or join the morning optional excursion to Mt. Pilatus – a mountain overlooking Lucerne that offers a unique alpine experience! This afternoon, travel by motorcoach to Basel, Switzerland for embarkation of your Emerald Cruises luxury Star-Ship. This evening, join your fellow travelers for dinner onboard. **Meals: B, D**

DAY 5 Breisach, Germany: Today you have a choice of activities. Visit a typical Black Forest Village, full of charm, cuckoo clocks and other German specialties. See demonstrations of traditional handicrafts, each offering a glimpse into rural life in the forest. Learn how the famous Black Forest cake is made and enjoy a sampling of this local treat. Alternatively, take part in a guided hike along some of the Black Forest trails. **Meals: B, L, D**
EmeraldPLUS: Black Forest cake demonstration and tasting
EmeraldACTIVE: Guided hike in the Black Forest region (instead of included tour)

DAY 6 Strasbourg, France: Once docked in Kehl, coaches await to take you across the river to Strasbourg, the capital city of the Alsace Region in France. The guided walking tour takes you along narrow lanes and across footbridges as you discover the Grande Île, the historical city centre and UNESCO World Heritage Site. Known for its medieval black and white timber-framed buildings, picturesque le Petite France, old tanning houses, canals and river locks, the city's star attraction is the ornate cathedral, dominating the main square. This afternoon, the city is yours to explore at leisure. **Meals: B, L, D**
DiscoverMORE: Excursion to Riquewihr (additional expense)

DAY 7 Mannheim / Heidelberg, Germany: Relax onboard as the vessel cruises along the Rhine River to Mannheim, docking site for Heidelberg. Travel by coach to Heidelberg, home of the oldest university in Germany. The guided walking tour takes you through the cobblestone streets of the medieval city where you see the highlights and enjoy a wine-tasting before returning to the ship. Alternatively, hike from Mount Königstuhl to Heidelberg. **Meals: B, L, D**
EmeraldACTIVE: Hike from Mount Königstuhl to Heidelberg (instead of city tour)
DiscoverMORE: Evening Concert at Bruchsal Palace (additional expense)

DAY 8 Koblenz, Germany: Cruise to the 2000-year-old town of Koblenz, situated at the confluence of the Rhine and Moselle Rivers. Enjoy a walking tour through the streets of the city as your guide points out historic monuments and buildings. Panoramic views await from the visit to Ehrenbreitstein Fortress, reached by cable car, crossing the river! **Meals: B, L, D**
DiscoverMORE: Moselle & Cochem (Reichsburg) Castle Visit (additional expense)



Flowers and fragrances fill Keukenhof Gardens

DAY 9 Cologne, Germany: Continue cruising along the Rhine River to Cologne. Founded by the Romans, the city is one of Germany's oldest and is famous for its magnificent UNESCO World Heritage-listed gothic cathedral. Join your local guide for an included walking tour of the city, touching on the historical charm of the Old Town and its Roman history. Traverse the quaint alleyways and see historic monuments alongside modern architecture. The tour concludes at the cathedral, whose twin spires dominate the skyline. This evening, back onboard, join your Captain for a farewell reception and dinner. **Meals: B, L, D**
DiscoverMORE: Farina Eau de Cologne Museum (additional expense)

DAY 10 Amsterdam, the Netherlands: This morning, depart by coach for an included visit to the world-famous Keukenhof Gardens. Discover why it's called the "Garden of Europe" as you wander along the paths, admiring gorgeous flowers at the peak of tulip season. Unique flower shows in the pavilions along with colorful, artistic floral displays throughout the manicured garden, are sure to please! Return to the ship in the afternoon to explore the city of Amsterdam at your leisure. **Meals: B, L, D**

DAY 11 Amsterdam / USA: Bid 'auf wiedersehen' to Europe and return home with memories of life enriching experiences from your European adventure and cruise along the Rhine River during tulip time. **Meal: B**

Itinerary is subject to change.

CRUISE AND HOTEL ACCOMMODATIONS

Days 2 and 3 – Hotel Europe or similar, Lucerne, Switzerland

Days 4 through 10 – Aboard an Emerald Cruises Star-Ship

Post-cruise hotel stays available in Amsterdam. Call for details.



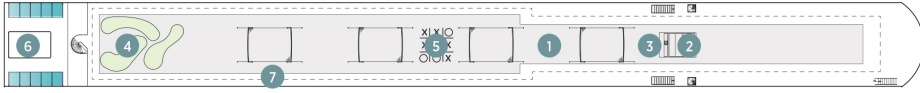
Exceptional Inclusions

- **23 Meals:** 9 breakfasts, 6 lunches and 8 dinners
- **Airport transfers** on tour dates when air is provided by Mayflower Cruises & Tours
- Visit **four countries**
- Two-night **hotel stay and touring in Lucerne**
- **Seven-nights in a suite or stateroom** of your choice onboard the vessel
- **First-class service** by an English-speaking crew
- **All gratuities included**
- Explore the magnificent **Keukenhof Gardens**
- **Shore excursions** with English-speaking local guides
- Visit **UNESCO World Heritage Sites**
- Personal **listening device** for shore excursions
- **All meals included** onboard
- Variety of **international cuisine**
- Complimentary **regional wines, beer and soft drinks** with onboard lunches and dinners
- **Onboard Activity Manager** will support all EmeraldACTIVE excursions and host daily onboard wellness activities, games, classes and evening entertainment
- Complimentary **bottled water** in your stateroom
- Complimentary **WiFi onboard**
- Complimentary **bicycles onboard** for use ashore
- **All port charges included**
- **\$55 in Mayflower Money**

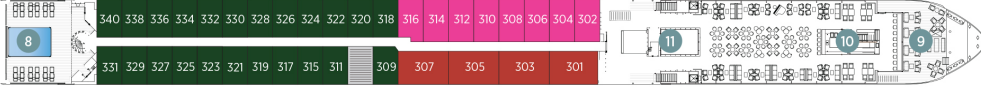
Emerald Cruises Star-Ships

Built: 2014-20 **Speed:** 15.5 mph **Staterooms:** 19 **Suites:** 72 **Length:** 443 ft. **Crew:** 47

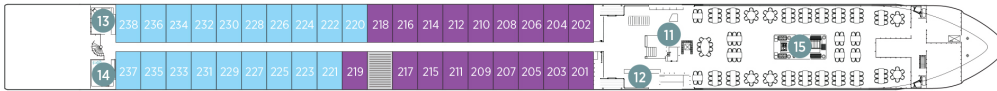
SUN DECK



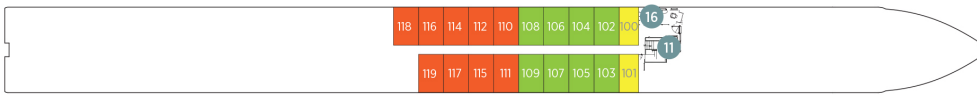
HORIZON DECK



VISTA DECK

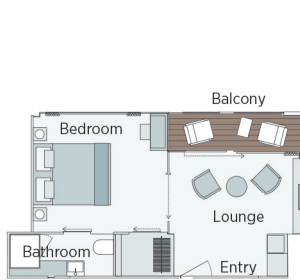


RIVIERA DECK



Public Areas and Ship Amenities

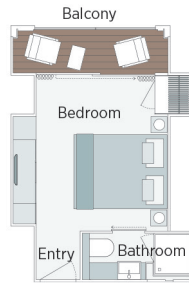
- 1 Sun Deck with Deck Chairs
- 2 Navigation Bridge
- 3 Sky Barbeque
- 4 Golf Putting Green
- 5 Games Area
- 6 Retractable Glass Roof
- 7 Walking Track
- 8 Daytime Pool & Bar / Evening Cinema
- 9 The Terrace
- 10 Horizon Bar and Lounge
- 11 Elevator
- 12 Reception
- 13 Wellness Area
- 14 Fitness Area
- 15 Reflections Restaurant
- 16 Hairdresser



Owner's One-Bedroom Suite

315ft²

CAT SA



Grand Balcony Suite

210ft²

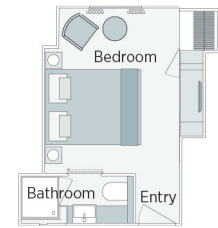
CAT S



Panorama Balcony Suite

180ft²

CAT A CAT B CAT C



Emerald Stateroom

162ft²

CAT D CAT E

2022 Departure Date
Tulip Time on the Romantic Rhine

CAT	STATEROOM / SUITE	DECK	APR 16 PER PERSON TWIN
E	Emerald Stateroom	Riviera	\$4,649
D	Emerald Stateroom	Riviera	\$4,749
C	Panorama Balcony Suite	Vista	\$5,299
B	Panorama Balcony Suite	Vista	\$5,549
A	Panorama Balcony Suite	Horizon	\$5,799
S	Grand Balcony Suite	Horizon	\$6,999

Pricing includes FREE round trip airfare for reservations booked by June 30, 2021!

Air itineraries may not be available until documents are received. Air seats are assigned by the airline for the entire group. Seat changes can only be attempted upon receipt of tickets and documents at which time availability may be limited. If specific seat assignments are vital to your reservation, we recommend individual air reservations rather than booking air with the group.

TRAVEL PROTECTION PLAN

We strongly advise purchasing insurance!
Please contact your Direct Travel consultant
For insurance information through our
Insurance partner, Allianz

PENALTIES

PENALTIES if you cancel and do not have Insurance:
Up to 91 days before departure – deposit amount (\$400)
90 days to day of departure – 100% of cost
No refund on unused portions of the tour

FOR RESERVATIONS OR INFORMATION CONTACT:

Bismarck Office:

701-258-5000

800-833-8787

561 S. 7th St.

Bismarck, ND 58504

Next to the Barnes & Nobles

Minot Office:

701-838-1000

800-732-0553

1015 S. Broadway

Minot, ND 58701

Town & Country Center

